

Pathways Patterns

February 2023 EDITION



Note from Admin Staff

This month was AMAZING! We had our first fundraiser at Top Golf and so many outings. Thank you to everyone who helped make these events a success. Happy February!

Note from Advocacy Council

WE HAD SO MUCH FUN THIS MONTH!

Enjoy this edition of the newsletter and let us know what you think!

Table of Contents

Page 1: Cover

Page 2: Birthdays

Page 3-7: PTO Events

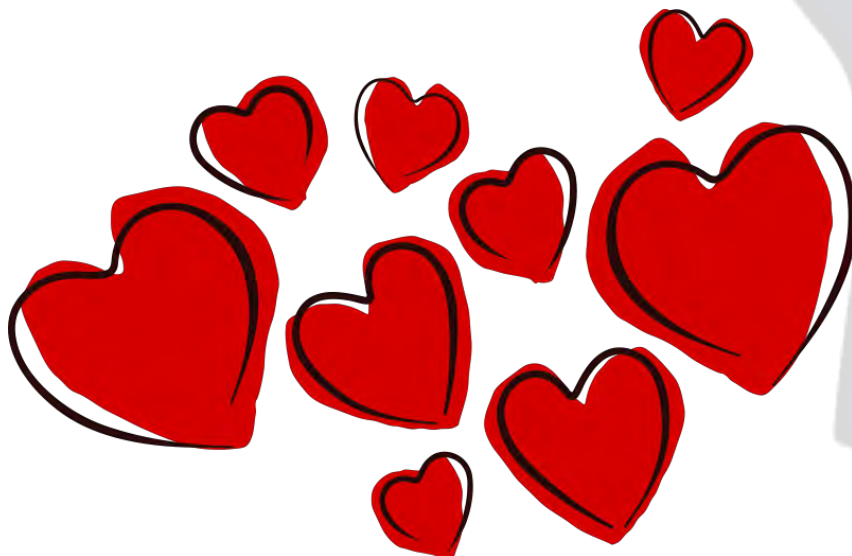
Page 8-15: Class Updates

Page 16: Disability Navigation

Page 17: Community Education

Page 18: Closure Schedule

Page 19-21: February Fun



Pathways Patterns

February 2023 EDITION

February Birthdays!



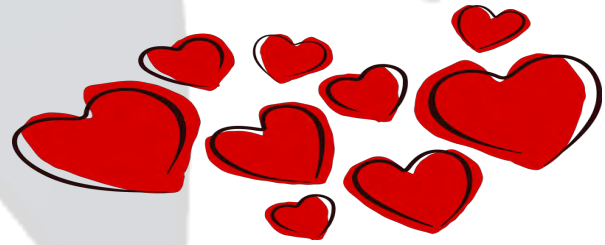
HAPPY BIRTHDAY

©DESIGNALIVE

Pathways Patterns

February 2023 EDITION

Thank you to everyone who made our Top Golf fundraiser possible. We had a blast and already have so many ideas for next year! See you soon!



Pathways Patterns

February 2023 EDITION

Thank you so much Meteorologist Justin Hobbs for coming to Pathways today and sharing all your weather expertise and for doing some cool experiments with us! We had a blast!



Pathways Patterns

February 2023 EDITION



Justin Hobbs



Pathways Patterns

February 2023 EDITION

National Read Across America Day

In honor of National Read Across America Day, Ashley Price (Director of Development) read us her rendition of the Dr. Seuss classic Green Eggs and Ham!

Thank you Ashley!



Pathways Patterns

February 2023 EDITION

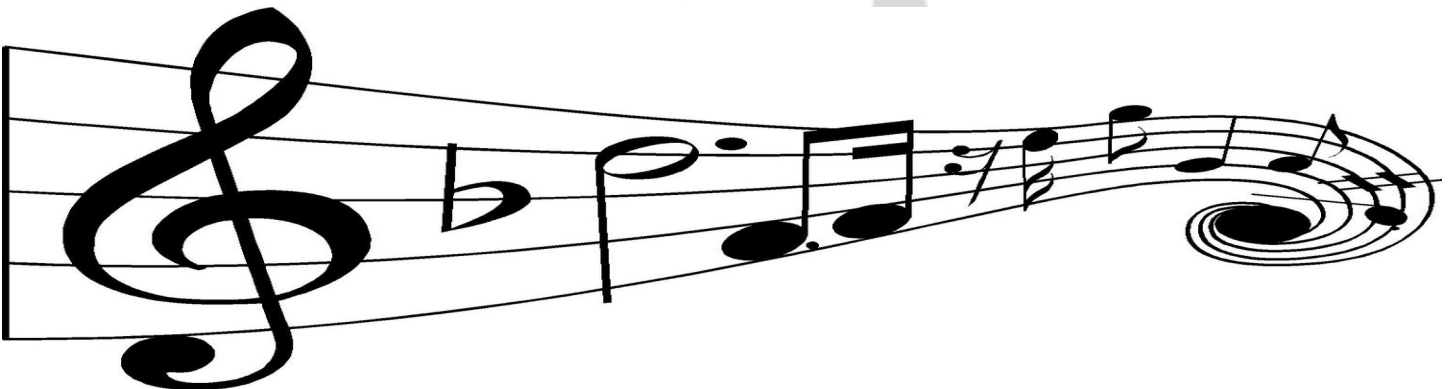
Thank you for letting us meet Carrie today and the rest of the sweet puppies!! We love our visits to the sanctuary!! Thank you Celia!!



Pathways Patterns

February 2023 EDITION

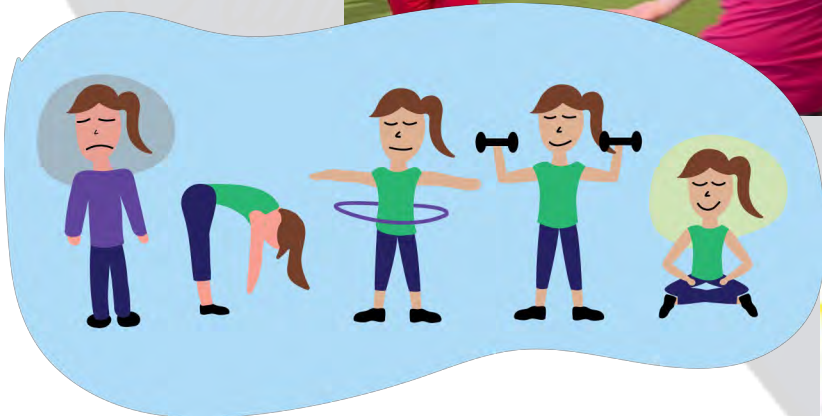
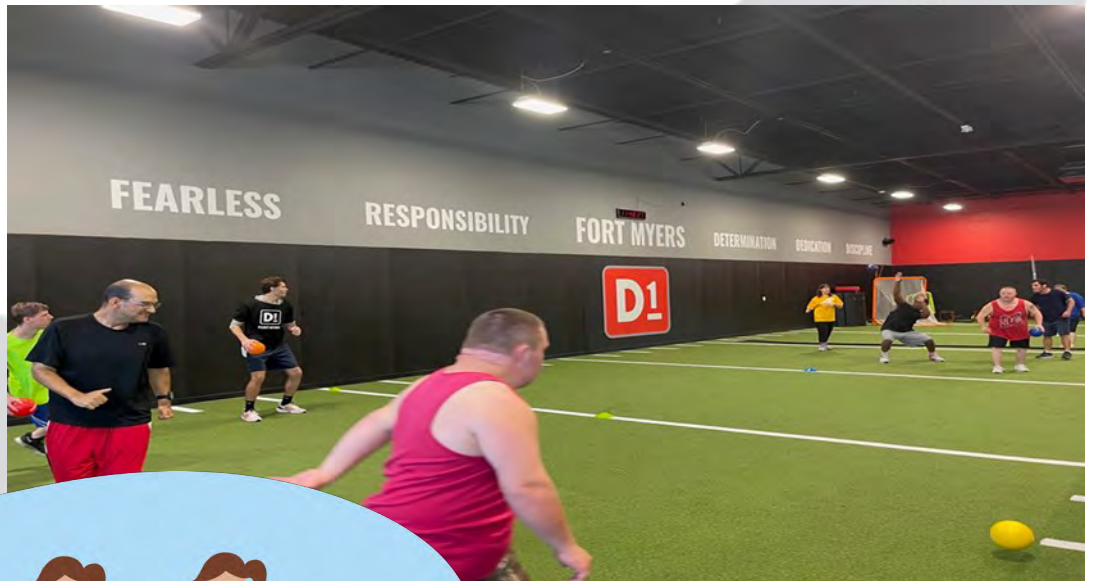
This Month in Choir, the participants sang at Hatton B. Rogers apartment complex. The performance was called, Love Is In The Air!



Pathways Patterns

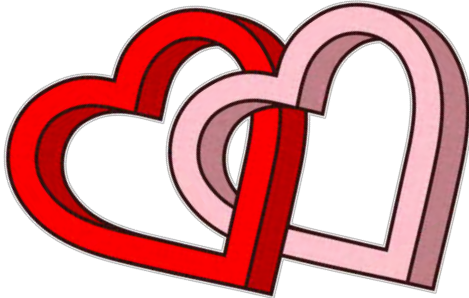
February 2023 EDITION

This Month, pathway rec was all about working together and coming together as one to get in a good workout.



Pathways Patterns

February 2023 EDITION



In library the class all read a book about Amelia Bedilia goes camping and we took a trip to PTO'S Library to pick out some books.



Pathways Patterns

February 2023 EDITION

Men's Club

This month, the men's club learned how to write checks!



Pathways Patterns

February 2023 EDITION

This month in stress management, we learned about different skills to help cope with the stress and how important it is to let go of the stress.



This month in daily living skills, we learned about how important it is to keep up with life skills and what to do with them.



Pathways Patterns

February 2023 EDITION

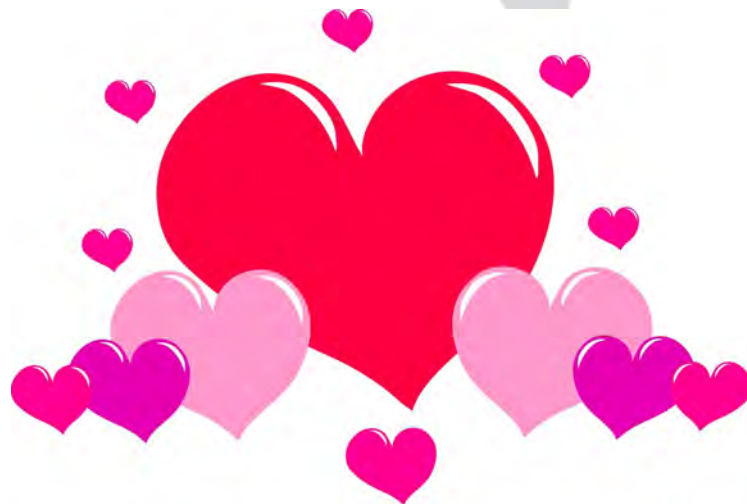


On this day in Pet Care, the class went on a trip to the Karl Drew Center for a Valentine's Day dance and bingo. The class also talked about cute and cuddly animals that are great gifts to give on this special day.

Pathways Patterns

February 2023 EDITION

This month in Events Planning, the class planned a love day dance where the participants could enjoy themselves and dance with their friends.



Pathways Patterns

February 2023 EDITION



DISABILITY *Navigation*



You've got questions. We've got answers!

The process of applying for assistance can be daunting and arduous. That's why we're here to provide you with guidance. We'll walk you step-by-step in understanding the iBudget and Medicaid waivers. It's our commitment to you that your family won't be lost on its new journey.



Jessica Tursi
Director of Disability Services
(239) 995-2106 [ext 2301]
jessicaavalos@goodwillswfl.org

Pathways Patterns

February 2023 EDITION



COMMUNITY *Education*



Coming Soon!

Pathways to Opportunity is excited to announce our upcoming community education sessions! There, you'll find all sorts of information regarding disability topics. Be sure not to miss them!



Jessica Tursi

Director of Disability Services

(239) 995-2106 [ext 2301]

jessicaavalos@goodwillswfl.org

Pathways Patterns

February 2023 EDITION

Program Calendar 2023

The Pathways to Opportunity (PTO) will be closed for the following holidays and in-service training days.

PTO may add additional closure days for In-Service training. Participants, caregivers, and guardians will be notified as much time in advance as possible.

Winter Quarter: 01/02/23—04/01/23

January:

New Years' Day: 01/02/23

In-Service Day: 01/16/23

February:

In-Service Day: 02/20/23

March:

In-Service Day: 03/27/23

Spring Quarter: 04/04/23 – 07/01/23

April:

None

May:

Memorial Day: 05/29/23

June:

NEW: In-Service: 06/14/23

Summer Quarter: 07/05/23 – 10/07/23

July:

In-Service Day: 07/03/23

Independence Day: 07/04/23

August:

None

September:

Labor Day: 09/04/23

In-Service Day: 09/22/23

Fall Quarter: 10/10/23 – 12/31/23

October:

In-Service Day: 10/02/23

November:

In-Service Day: 11/10/23

Thanksgiving: 11/23/23

In-Service Day: 11/24/23

December:

Christmas Day: 12/25/23

Pathways Patterns

February 2023 EDITION

Valentine's Day Word Search

L O V E I A T K C O K F N G
I E C R G K H T U D I U P I
N B R A G T S H P I S I G R
F U N T H G I N I L S I L L
A S C H A M G A D N E C A S
V A L E N T I N E S D A Y N
Z T I C H E E R S M T N K I
H H G P L O G A L H G D I G
D A T E N I G H T A N Y C H
N K I B R I E S M P S E R T
I N L A T H N E I P C D H K
R O M A N T I C L Y H R U K
I A G G P R P E D I N K G P
P A R T Y T I M E S A I S U

LOVE
CUPID
KISS
HUGS
CANDY
DATE NIGHT
ROMANTIC
GIRLS NIGHT
FUN
PARTY-TIME
CHEERS
VALENTINE'S-DAY
HAPPY

Pathways Patterns

February 2023 EDITION

Valentine's Day WORD SCRAMBLE

VEOL _____

ORMECNA _____

ESRHAT _____

ENVTAIELN _____

IUCDP _____

UHG _____

SKSI _____

DFSNRIE _____

HSEATREWET _____

CYAND _____

LOWESFR _____

AHTRE _____

DIOYALH _____

ACTOEOLCH _____

SFIGT _____

ARCD _____

WWW.TWOKIDSANDACOUPON.COM

Pathways Patterns

February 2023 EDITION

Went from
"cacti" to
"cactus."



Why do beets
always win?

They are un-beet-able.



What flower gives
the most kisses on
Valentine's Day?

T U L I P S



How can you get arrested
on Valentine's Day?

For stealing someone's
heart!

